

## Montague Road Wimbledon, SW19 1SY

**£375,000 Leasehold - Share of Freehold**

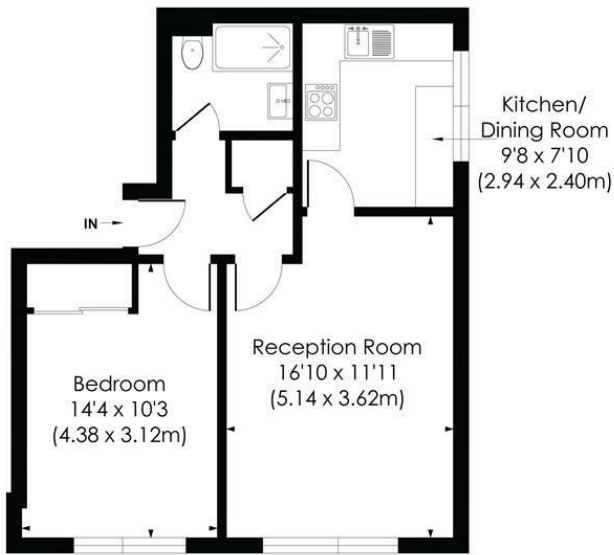


**A spacious one double bedroom, purpose built flat located on a sought after road within close proximity of Wimbledon town centre, mainline and Northern Line stations. This light filled flat has a large bedroom, well equipped separate kitchen, bathroom and a bright lounge/dining room. With the added benefit of off-street parking, no onward chain and a long lease this is an ideal first time purchase or investment so an early viewing is recommended.**

**MONTAGUE ROAD, SW19**

Approx. Gross Internal Floor Area

**514 Sq. ft/47.71 Sq. m**



SECOND FLOOR

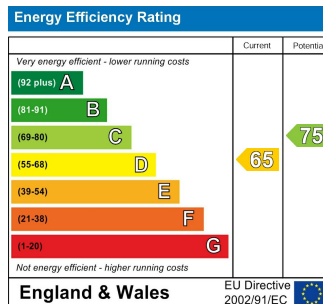


© Pixangle Property Marketing Ltd. info@pixangle.com Tel: 0208 870 2118



This floor plan has been prepared for the purpose of illustration only in accordance with the latest RICS code of measuring practice and is not to scale. All measurements and areas are approximate and whilst every effort has been made to ensure the accuracy of the plan contained here, no responsibility is taken for any error, omission or misstatement.

- Top Floor One Bedroom Flat
- Large Reception Room
- Separate Fitted Kitchen
- Close to Wimbledon District Line & Northern Line Station
- Off-Street Parking
- Sought After Ministers Location
- Share Of Freehold
- Service Charge - £1,429pa
- EPC Rating D
- Council Tax Band C



**For Free Mortgage Quote and Best Mortgage Rates, call an Ellisons Mortgage Advisor on 020 8944 9494**



Although these particulars are believed to be correct, their accuracy is not guaranteed and they do not form part of any contract.

**Celebrating 30 years of successful Sales and Lettings in Merton**

